

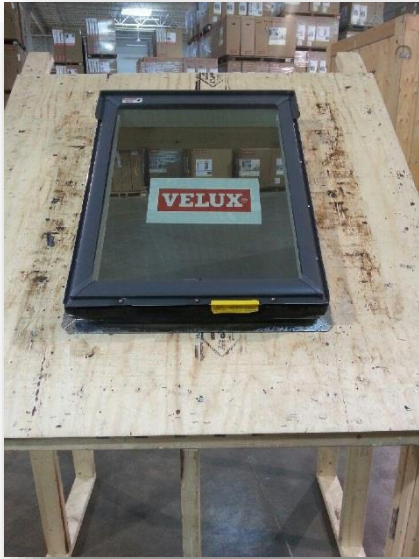


# VIP Members Inspection Photo Guidelines

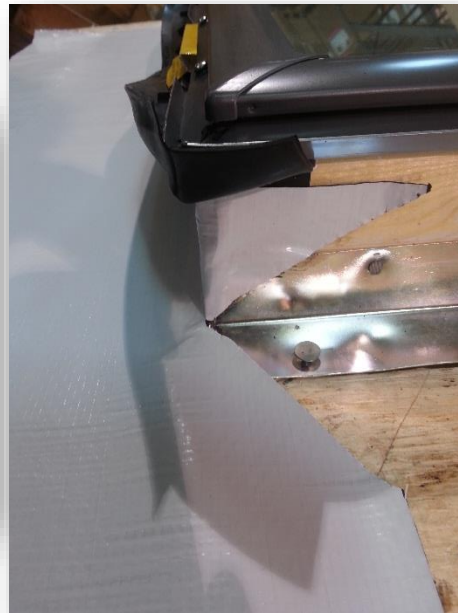
*For **deck mount** installations*

# Certification Guidelines:

- ▶ VELUX flashing must be used for ALL skylight photo inspection installations
- ▶ If submitting a deck mount install please note that you will also be certified for a curb mount skylight
- ▶ If submitting a curb mount install please refer to the curb mount inspection guide
- ▶ Please allow for 1 week for the technical department to review and approve installation



- ▶ 1- Skylight on roof deck with shingles removed



- ▶ 2- Ice & water shield cut on 45 degree angles



- ▶ 3- Ice & water shield on roof deck prior to overlap on shingle (minimum 3 shingles below)



- ▶ 4- All four sides must be wrapped with ice & water shield prior to shingles and step flashing



- ▶ 5- UF gasket should be on the outer part of the ice & water shield
- ▶ Note: UF gasket is on FS skylights only, see installation instructions for other gasket positioning (if applicable) when installing different models



- ▶ 6- Install shingles to the bottom of skylights



- ▶ 7- Install bottom pan and position UF gasket as in step 5

*\*Note- no nails should be exposed once installation is complete*



- ▶ 8- Step flashing must be interweaved between each shingle

*\*Note- 3 ½ " overlap minimum between step flashing*



- ▶ 9- Position of last step flashing before top pan is applied (see EDL instructions for correct nail position in step flashing)



- ▶ 10- Make sure step flashing does not poke a hole in ice & water shield. Recommended to cut on a slight angle



- ▶ 11- Secure cladding to top pan with folded tab



- ▶ 12- Tap down lip on top of head flashing pan





- ▶ 13- Apply strip of ice & water shield over top pan to extend coverage on top of pan



- ▶ 14- Starter shingle applied (if needed)



- ▶ 15- 2"-4" space between top shingle and pan



- ▶ 16- COMPLETE! NO LEAK  
*\*Note- pan can be hidden with dummy shingle if needed*

# CONTACT US

- ▶ Please email your install photos to:
  - ▶ Pat Biase, Product Performance Manager- [pat.biase@velux.com](mailto:pat.biase@velux.com)
  - ▶ Crystal Venne, Technical Service Administrator- [crystal.venne@velux.com](mailto:crystal.venne@velux.com)
  
- ▶ Be sure to include:
  - ▶ First and last name
  - ▶ Daytime contact number
  - ▶ Business name
  - ▶ City
  - ▶ Province
  - ▶ Any other specialty information
  
- ▶ If you have not already done so please register your business to become a VIP member at- [vipmembers.ca](http://vipmembers.ca)